



How can I find out more about living sustainably?

South Somerset Together is the Local Strategic Partnership made up of a number of local public, private and voluntary sector organisations that meet every two months. The reason the Partnership was formed was to change the way things are delivered. Part of this is simply to make sure organisations "talk" to each other, understand what needs to be done and get on and do it together – saving time and money! The Partners in South Somerset Together produced the *Shaping South Somerset – A Strategy for Sustainable Living (2008-2026)*, which is a blueprint for how everyone can start to work towards a more sustainable future. It covers all aspects of life from designing and building the man-made environment whilst conserving and utilising the natural environment, making sure local economies thrive providing jobs and opportunities, making sure everyone feels valued, safe and have all the things they need to live fulfilling, happy and healthy lives. Most importantly, it looks at actions that will start to address the really big issues of Climate Change, Peak Oil, food availability, and much more. Rather than painting a scary picture of the future, it shows how, by making small changes in what we do now we can make a real difference – it is possible to live sustainably and we can do it together.

Where can I get help for a community project?

There are lots of ways that you can get involved in helping your community become more sustainable. Project ideas can range from community woodlands (for fruit, nuts and wood for heat), allotments and gardens for food growing, community transport schemes, activities for children, young people, the elderly and other groups of people, to learning new skills, becoming more active or just having some fun! You may need some advice about how to go about setting a project up, planning and funding it, who to talk to in your community about what it should achieve and then getting people involved in making it happen. You can talk to your Parish or Town Council, South Somerset District Council, Somerset County Council or voluntary support organisations such as the South Somerset Association for Voluntary & Community Action (SSVCA) and others. Look on the South Somerset Together website for links to all the Partner organisations showing what they can offer to help.

What is 350 and 10/10?

There are currently two initiatives that are promoting action to address Climate Change.

350 is an international campaign to inspire the world to rise to the challenge of the climate crisis - to create a new sense of urgency and possibilities for our planet. CO2 is currently at 385.92 parts per million and scientists say that 350 parts per million CO2 in the atmosphere is the safe limit for humanity. Learn more about 350 – what it means, where it came from and how it involves you through the website: www.350.org.

10:10 is an ambitious project to unite every sector of British society behind one simple idea: that by working together we can achieve a 10% cut in the UK's carbon emissions in 2010. Learn more about 10:10 – what it means, where it came from and how it involves you through the website: www.1010uk.org.

This document is available in other languages, large print and audio format upon request.
Dokument ten jest na życzenie udostępniany w języku polskim.
Este documento encontra-se disponível em português, a pedido.

Less Carbon... ...More Living

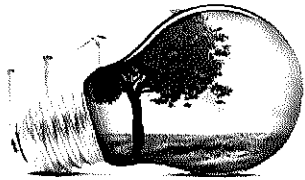
Find out how you can help
SAVE the planet...and money!



Making sustainability happen!

www.southsomersettogether.org.uk

lsp@southsomerset.gov.uk



Saving energy in your home and business

Contact:

The Energy Saving Trust:
www.energysavingtrust.org.uk
The Carbon Trust:
www.carbontrust.co.uk
SSCA:

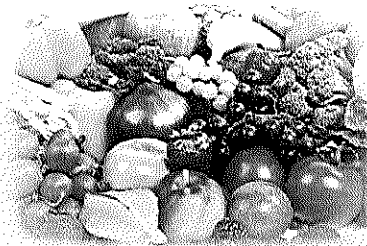
www.southsomersetclimateaction.org.uk



Being more active

Contact:

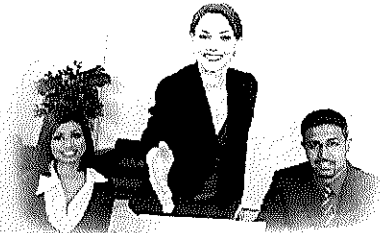
South Somerset District Council -
Active Lifestyles Team:
01935 462462
www.southsomerset.gov.uk
Somerset County Council:
www.somerset.gov.uk



Growing food and eating healthily

Contact:

South West Counties Allotment Association:
www.allotmentssouthwest.org.uk
Somerset Community Food:
www.somersetcommunityfood.org.uk



Getting a better job and improving your skills

Contact:

Learn Direct:
www.learnirect.co.uk
Job Centre Plus:
www.jobcentreplus.gov.uk
Yeovil College:
www.yeovil.ac.uk

What does Zero-Som mean?

"Not another zany branding slogan that is meaningless to everyone except the few that invented it" ... I hear you say! But this is easy because all it means is we are aiming for zero carbon (CO₂ emissions) in South Somerset and it is just a way of keeping this vital thought in mind in everything we do every day. Why is this important? The South West's eco-footprint shows that if we replicated it worldwide, we would need two extra planets to sustain us. So we are currently consuming three planets' worth of our natural resources. That is definitely not going to be able to continue for much longer. We have to do something. So we have put some local sources of information that can help you personally reduce your carbon footprint. Join us in doing.... *Less carbon - More living!*

Look at our website: www.southsomersettogether.org.uk

36
What practical things can I do?

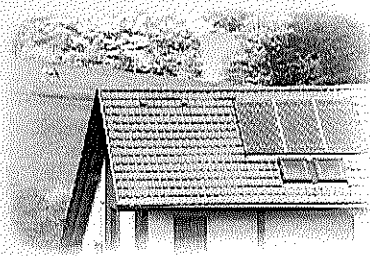
What difference can I make?



Being more involved in your community.

Contact:

The Volunteer Bureau - The SSVCA:
www.ydcvs.org.uk
South Somerset District Council:
www.southsomerset.gov.uk



More sustainable homes

Contact:

The Ecos Trust:
www.ecostrust.org.uk
www.breeam.org



Reducing waste

Contact:

Somerset Waste Partnership:
www.recyclesomerset.info
Carymoor Educational Centre:
www.carymoor.org.uk



Using public transport.

Contact:

Transporting Somerset: 0845 345 9155
Email: transport@somerset.gov.uk
Wessex Rail Partnership:
www.heartofwessex.co.uk
Community Transport Schemes:
SSVCA: 01935 475914
Wincanton CAT: 01963 33864
Somerton/Langport Links: 01458 250169
Ilminster & District: 01460 55540